

DSW Chair

SoftWork Chair



DSW Chair Collection



Duo SoftWork Chair is a collection of visually soft seats that reflect the ever-changing definition of the workplace. A chair developed with all-embracing formal and functional features, defined by a rounded and padded backrest and a subtly contoured seat, perfect for shared and coworking spaces, office workstations, touchdown spaces, and meeting and training rooms.

DSW is a modern all-around armchair that combines the features of traditional office, meeting and visitor seats with the concept of agility and easy communication: people coming into the office for short periods must find a comfortable and functional product that does not require complex adjustments yet enables them to work in absolute comfort and feel free to move and interact freely.

DSW is equipped with a series of intuitive and highly functional user mechanisms: height adjustable backrest as standard, self-weighting synchronised tilting mechanism with generous tilt angle which automatically adjusts the counter-thrust support intensity during tilting movements, 3D adjustable armrests. The seat is also depth adjustable to ensure high performance even more in line with a traditional office chair without compromising on aesthetics.

The load-bearing structure is made from die-cast aluminium to guarantee a long service life, available in epoxy painted, polished or chromed finish. Full upholstery back and seat cover made from fabric or leather. The seats comply with the main international regulatory standards.

DSW is a sustainable and environmentally friendly product: most of the upholstery fabrics are made of recycled polyester and OEKO-TEX 100 certified; Seaqual upholstery is also available, a fabric obtained from recycled plastic bottles recovered out of the ocean.

DSW Chair Low Back



DSW Low Back is an armchair developed in the spirit of 'desk and seat sharing': a seat with transverse formal features and intuitive adjustment mechanisms, perfect for adapting quickly to many different users and, at the same time, as comfortable and high-performing as a traditional office chair. DSW Low Back is part of a multi-functional family of work and conference chairs: office chairs perfect for a variety of public, private and even home-office environments.

Technical Specifications

Mechanism: Synchronised tilting mechanism with automatic weight adjustment: during tilting movements, the counter-thrust of the backrest increases in proportion to the force exerted. Possible adjusting of the tilting tension according to individual preference using a knob under the seat. The mechanism can be locked in a vertical sitting position and in three intermediate positions using a side lever. Available on request with or without forward tilting (disengageable). Mechanism shell in black polyamide.

Load-bearing structure: The U-shaped die-cast aluminium rear structure guarantees maximum torsional strength and durability. It supports the backrest frame and transfers

the geometry of the tilting movement to the backrest and seat. Available in three different finishes: epoxy painted, polished or chromed.

Low backrest: Low backrest shell in structural polyurethane padded with cold-foamed polyurethane cushion upholstered with fabric or leather. Height adjustment elements integrated into the frame.

Backrest height adjustment: Simple and intuitive backrest height adjustment, a standard feature of all DSW seats, makes the chair adaptable to various user heights. The backrest height adjustment range is 6.5 cm, positionable in six positions.

Seat: Made from cold-foamed polyurethane with a polypropylene structural insert. Upholstery in fabric or leather. On request, Class 11M approved foam that complies with all safety international standards.

Seat depth: easily adjustable seat-depth from a sitting position using an intuitive lever positioned under the seat. Adjustment range of 7.5 cm.

Height adjustment: The seat height can be adjusted using a lever, with a maximum range of 13 cm.

Armrests: Adjustable 3D armrests (height/depth/width). Additional width adjustability

(4D) is available on request. Armrest pads made from soft black thermoplastic material (TPU). The vertical armrest support is made from die-cast aluminium with an epoxy painted, glossy or chrome finish.

Base: Five-spoke, made from die-cast aluminium, with a chrome, glossy or painted finish matching the structure or in black or light grey batch-dyed plastic material.

Castors: Made from black batch-dyed plastic material, 6 cm in diameter, with a soft central element for use on any floor type. Automatic safety brake compliant with the EN 12529:2001 standard.

Packaging: Standard delivery of the assembled product in a cardboard box. Available unassembled on request (assembly must be performed by qualified expert personnel).

DSW Chair Mid Back



DSW Mid Black combines a 'home-feel' design with technical and functional features typical of traditional work chairs. The result is a product that fits perfectly into a wide variety of working environments, from huddle spaces to individual work stations as well as meeting/conference rooms. The medium height backrest is suitable for prolonged use of the seating and its adjustable height range allows nearly every user for optimal individual accommodation.

Specifiche Tecniche

Mechanism: Synchronised tilting mechanism with automatic weight adjustment: during tilting movements, the counter-thrust of the backrest increases in proportion to the force exerted. Possible adjusting of the tilting tension according to individual preference using a knob under the seat. The mechanism can be locked in a vertical sitting position and in three intermediate positions using a side lever. Available on request with or without forward tilting (disengageable). Mechanism shell in black polyamide.

Load-bearing structure: The U-shaped die-cast aluminium rear structure guarantees maximum torsional strength and durability. It supports the backrest frame and transfers

the geometry of the tilting movement to the backrest and seat. Available in three different finishes: epoxy painted, polished or chromed.

Mid backrest: Mid backrest shell in structural polyurethane padded with cold-foamed polyurethane cushion upholstered with fabric or leather. Height adjustment elements integrated into the frame.

Backrest height adjustment: Simple and intuitive backrest height adjustment, a standard feature of all DSW seats, makes the chair adaptable to various user heights. The backrest height adjustment range is 6.5 cm, positionable in six positions.

Seat: Made from cold-foamed polyurethane with a polypropylene structural insert. Upholstery in fabric or leather. On request, Class 11M approved foam that complies with all safety international standards.

Seat depth: easily adjustable seat-depth from a sitting position using an intuitive lever positioned under the seat. Adjustment range of 7.5 cm.

Height adjustment: The seat height can be adjusted using a lever, with a maximum range of 13 cm.

Armrests: Adjustable 3D armrests (height/depth/width). Additional width adjustability

(4D) is available on request. Armrest pads made from soft black thermoplastic material (TPU). The vertical armrest support is made from die-cast aluminium with an epoxy painted, glossy or chrome finish.

Base: Five-spoke, made from die-cast aluminium, with a chrome, glossy or painted finish matching the structure or in black or light grey batch-dyed plastic material.

Castors: Made from black batch-dyed plastic material, 6 cm in diameter, with a soft central element for use on any floor type. Automatic safety brake compliant with the EN 12529:2001 standard.

Packaging: Standard delivery of the assembled product in a cardboard box. Available unassembled on request (assembly must be performed by qualified expert personnel).

Operations



Auto-fit tilting mechanism

The auto-fit mechanism is designed to automatically adjust the backrest resistance based on the weight of the user. A knob grants further adjustment according to individual preferences. The backrest can be locked vertically and in 4 positions.



HiA Backrest

The height adjustable backrest enables chair to accommodate every user stature. Each chair offers the height adjustable back support as a standard feature. Backrest height can be adjusted with 6,5 cm adjustment range.



Armrests adjustable in height

The armrests are adjustable in height. The support pads are made of soft thermoplastic polyurethane (TPU). The armrest vertical support is made of die-cast aluminum.



3D Adjustable armrests

The 3D armrests are adjustable in height, depth and width. A further width adjustment (4D) is available on request.



Adjustable seat depth

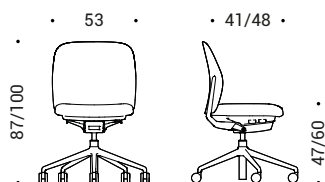
The seat depth adjustment is easily activated in seated position by means of an intuitive lever with 7 cm adjustment range.



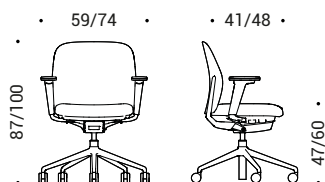
Adjustable seat height

Seat height can be adjusted with a lever. The range of the adjustable mechanism is 13 cm.

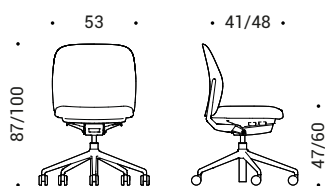
Dimensions



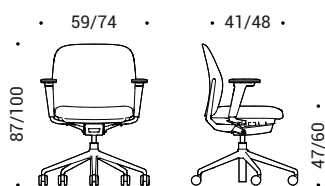
DSW.400 | Standard seat without armrests



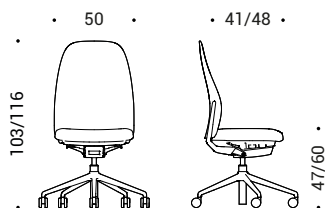
DSW.404 | Standard seat with 3D adjustable armrests



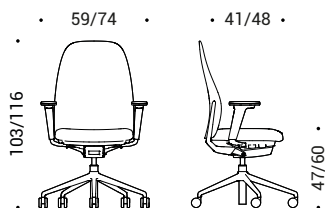
DSX.400 | Wide seat without armrests



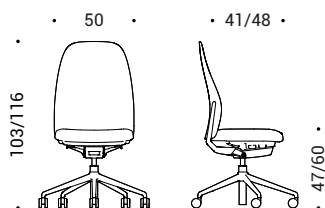
DSX.404 | Wide seat with 3D adjustable armrests



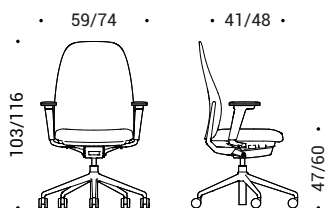
DSW.500 | Standard seat without armrests



DSW.504 | Standard seat with 3D adjustable armrests



DSX.500 | Wide seat without armrests



DSX.504 | Wide seat with 3D adjustable armrests

Materials and Finishes

Aluminum | Base and structure



070 | Grey
Powder coated



111 | Black
Powder coated



R11 | Brown copper
Powder coated



R12 | Dark blue
Powder coated



R15 | Grey green
Powder coated



47 | Polished



55 | Chromed

Nylon | Base

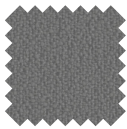


070 | Grey

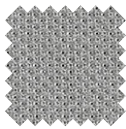


111 | Black

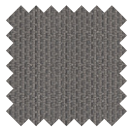
Fabric



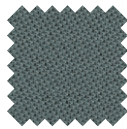
Cat. A | Bravo
(3 colors)



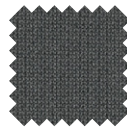
Cat. B | Atlantic
(17 colors)



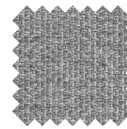
Cat. B | Mini
(7 colors)



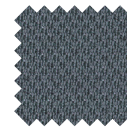
Cat. B | Tonal
(15 colors)



Cat. C | Cura
(14 colors)



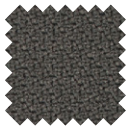
Cat. C | Mini Melnge
(9 colors)



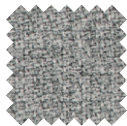
Cat. C | Sealife
(11 colors)



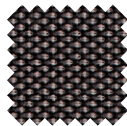
Cat. C | Sotega
(10 colors)



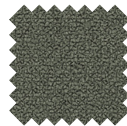
Cat. C | Step
(8 colors)



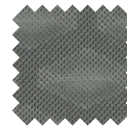
Cat. C | Step Melange
(8 colors)



Cat. F | Breeze Fusion
(5 colors)



Cat. F | Grain
(10 colors)



Cat. K | Cubic, in combination with Atlantic
(10 colors)

Leather

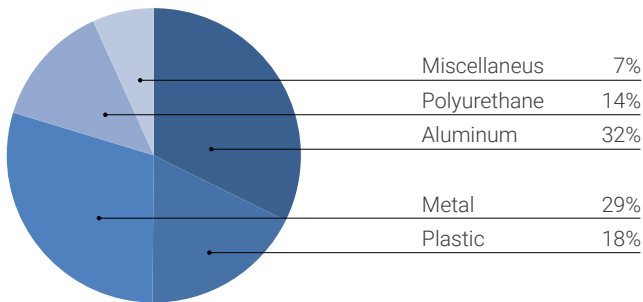


Cat. E | Leather
(18 colors)

Sustainability

Our design and production philosophy is based on the pursuit of simplicity in order to create sustainable and durable collections. Our products have an unmistakable design which however is subjected to the careful evaluation of any possible aspects to improve sustainability, durability and recyclability in accordance with the highest international standards. We believe that our responsible approach may effectively reduce environmental impact of our products throughout the entire lifecycle of the various components. We do not use chemicals hazardous or dangerous to the environment, and the materials we use are tested and evaluated for potentially harmful effects on human health and the environment. Where possible, we reduce packaging materials to a minimum, which also optimises transport volume.

DSW Chair - Material content



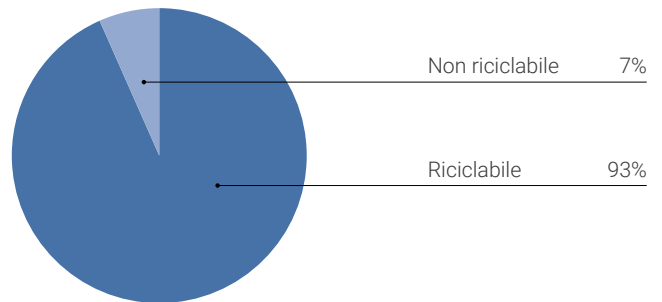
The materials we select meet high quality standards, guaranteeing durable and eco-friendly products.

At ICF, we use:

- Ecological and/or post-consumer recycled materials;
- Products free from formaldehyde and toxic substances;
- Finishes free from hexavalent chromium.

Each component of the seat can be disassembled for repair, reuse and recycling.

DSW Chair - Recycling content



DSW Chair is a chair weighing approximately 16kg and approximately 93% recyclable when completely and correctly separated.

DSW Chair is conceived in accordance with the guidelines of eco-design, a technical methodology applied during design of a product in order to reduce that product's carbon footprint and environmental impact.

Note: Material and Recycling content percentages may vary depending on the specific model evaluated and consequently of the structural materials and finishes of the considered model.

Fabrics

We use fabrics that guarantee high performance in terms of comfort, strength and sustainability. Attention to the health and safety of people and the environment are verified through globally-recognised product certification. Most of the upholstery we use for our seating collections is made from recycled materials which can also be reused at the end of their service life.



Global Recycled Standard

The GRS is an international standard certifying pre-consumer and post-consumer recycled content in finished products. Certification is only issued after auditing by an accredited body which verifies the company's compliance in terms of ethical, social and environmental issues and with restrictions on chemical products used in production processes.



OEKO-TEX®

All our fabrics are certified as STANDARD 100 by OEKO-TEX®, which means they are ecologically harmless to humans. The test reviews numerous regulated and unregulated substances potentially harmful to human health.



EU Ecolabel

Through EU Ecolabel certification, we guarantee that our fabrics are produced with less waste and a lower environmental impact that similar items available on the market. This includes all stages of the fabric's life cycle.



SEAQUAL® YARN

SEAQUAL® YARN is a high-quality, 100% post-consumer recycled polyester yarn made from recycling of plastic waste recovered from the oceans thanks to the SEAQUAL INITIATIVE. This initiative is a unique collaborative community with a single voice against plastic pollution.